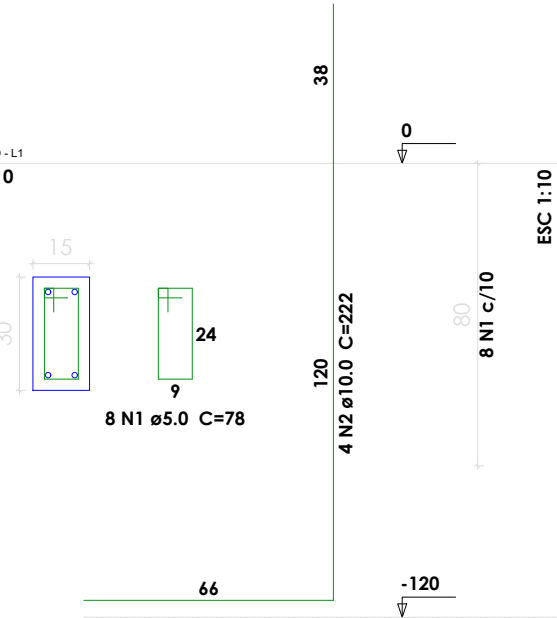
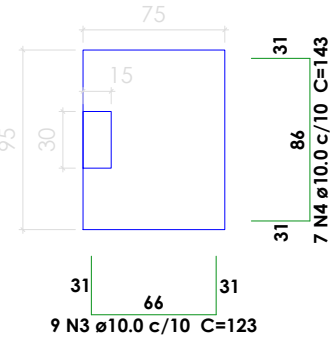


P24=P47

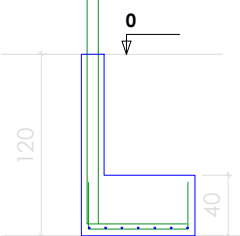
FUNDAÇÃO - L1
ESC 1:10



S24=S47
PLANTA
ESC 1:20

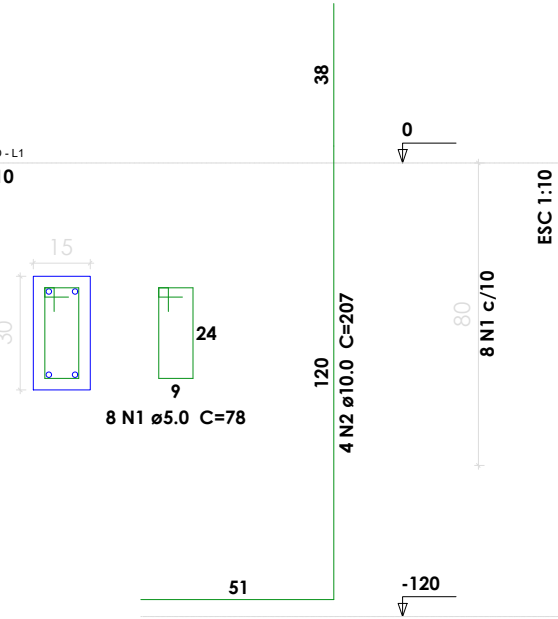


CORTE
ESC 1:25

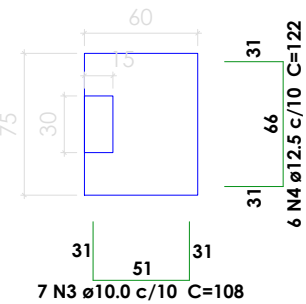


P29=P30

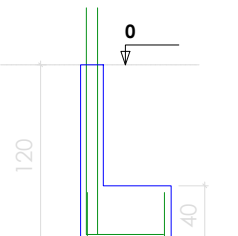
FUNDAÇÃO - L1
ESC 1:10



S29=S30
PLANTA
ESC 1:20

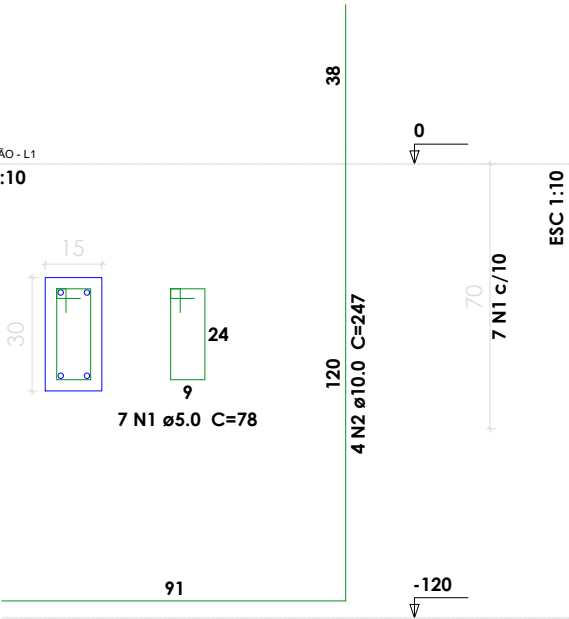


CORTE
ESC 1:25

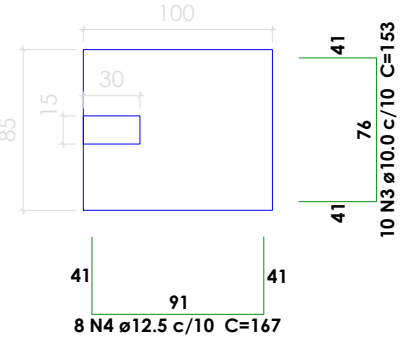


P38=P39

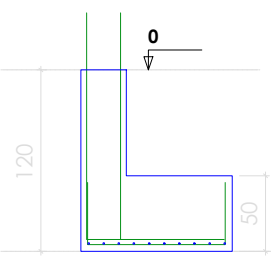
FUNDAÇÃO - L1
ESC 1:10



S38=S39
PLANTA
ESC 1:20

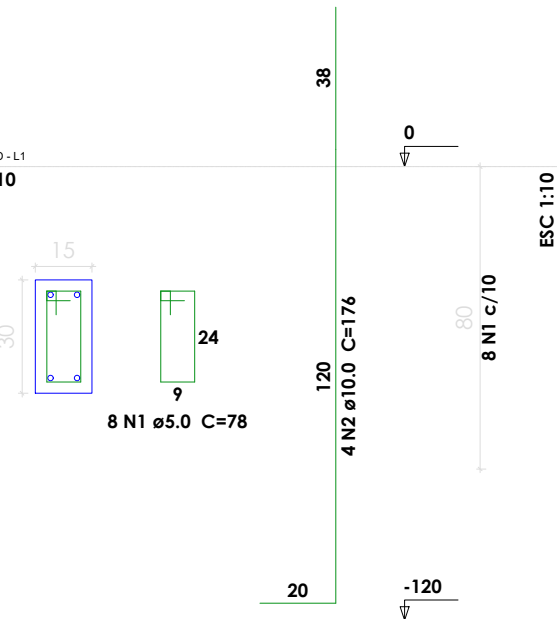


CORTE
ESC 1:25



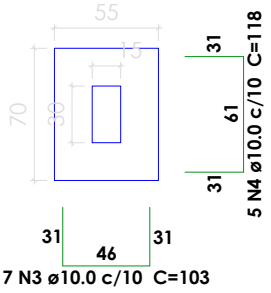
P55=P56=P57=P58=P61=P62=P63=P64=P65=P66
=P67=P68=P69=P70=P71=P72=P73=P74

FUNDAÇÃO - L1
ESC 1:10

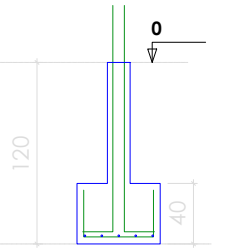


S55=S56=S57=S58=S61=S62=S63=S64=S65=S66
=S67=S68=S69=S70=S71=S72=S73=S74

PLANTA
ESC 1:20



CORTE
ESC 1:25



Resumo do aço

AÇO	DIAM (mm)	C.TOTAL (m)	PESO (kg)
CA50	10.0	2267.3	1397.8
CA60	12.5	92	88.6
CA60	5.0	565.8	87.2
PESO TOTAL (kg)			
CA50	1486.5		
CA60	87.2		

Volume de concreto (C-25) = 26.66 m³
Área de forma = 209.3 m²

BLOCOS DE FUNDAÇÃO

ESC: 1/200



PREFEITURA MUNICIPAL DE
VÁRZEA GRANDE
Mais por Você. Mais por Várzea Grande.

PREFEITURA MUNICIPAL DE VÁRZEA GRANDE

Av. Castelo Branco, Espaço Municipal, 2500 - Centro Sul, Várzea Grande/MT CEP 78125-700 - Fone/Fax: 65 3688 8000

PROJETO: ESTRUTURAL

OBRA: AMPLIAÇÃO ESCOLAR

UNIDADE ESCOLAR:

EMEB ABDALA JOSE DE ALMEIDA

ASSUNTO:

BLOCOS DE FUNDAÇÃO

LOCALIZAÇÃO:

RUA MARIA DE LOURDES JORDÃO BAIRRO: SÃO MATHEUS
CEP: 78.152.116 - VÁRZEA GRANDE

AUTOR DO PROJETO:

GUILHERME SIMPLÍCIO DIAS
ENGENHEIRO CIVIL CREAMT 036575

UNIDADE:

METROS

ESCALA:

INDICADA

DATA:

JANEIRO/2023

FOLHA Nº

22/23